

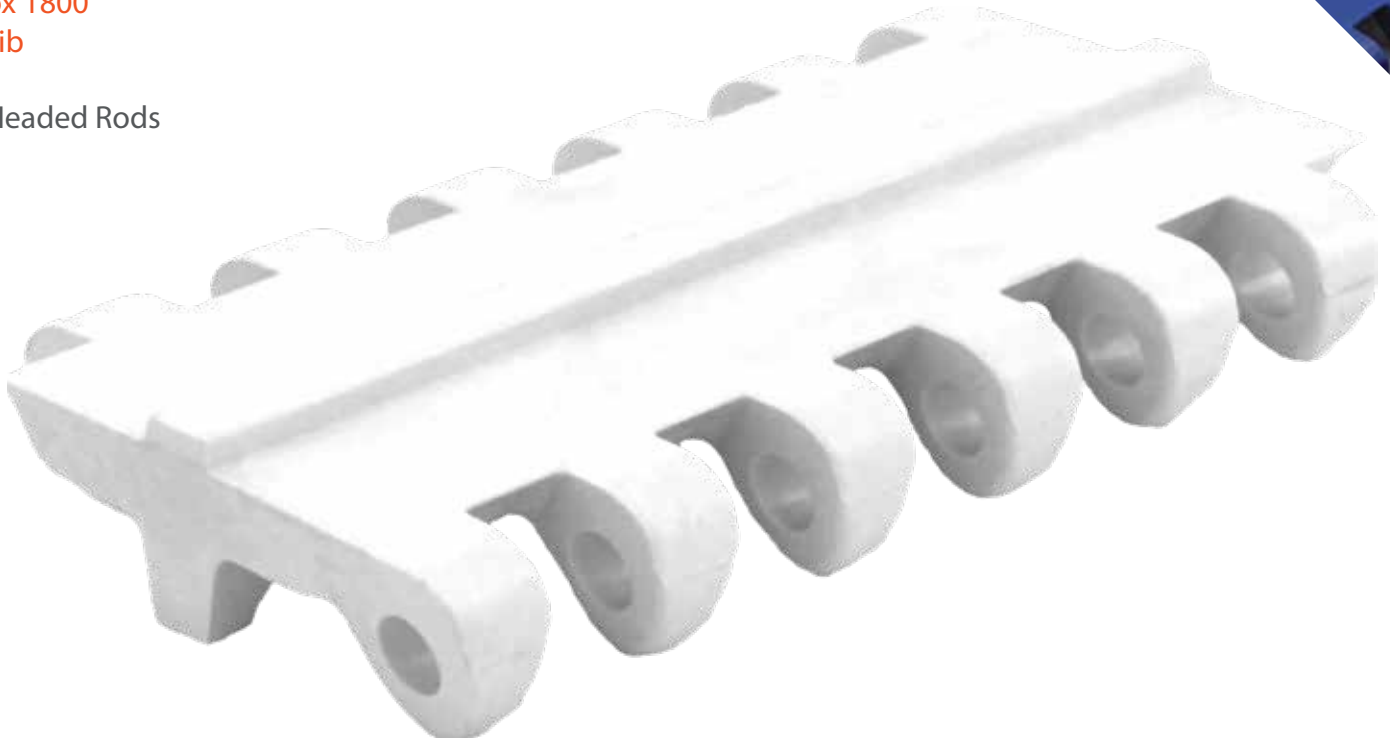
# SF-250E

## Heavy Duty Mini Rib

### 2.5" Pitch

Replaces:  
Intralox 1800  
Mini Rib


\*ULT Headed Rods



Pitch	Thickness	Min Width	Rod	Open Area	Flights	Side Guards
2.5"	.855"	4"	.312"	0%	Yes	No
63.5mm	21.72mm	101.6mm	7.9mm			

Belt Material	Standard Rod Material	Belt Strength		Temperature Fahrenheit		Belt Weight Lb/Ft <sup>2</sup>	Colors
		Straight Lb/Ft	Curved Lb/Ft	Min	Max		
PE	ULT	710	-	-76°	140°	2.25	N, B
Acetal	ULT	1400	-	-50°	150°	3.60	N, DB
Ultra Tuff™	ULT	1386	-	30°	302°	3.36	N, W, DB
Ultra Tuff XMD™	ULT	1386	-	30°	302°	3.70	RB

BW = Belt Width, W-WHITE, B-BLUE, DB-DARK BLUE, RB-ROYAL BLUE, N-NATURAL, G-GRAY, BK-BLACK, BR-BROWN

		
# of Teeth	PD	Bore Size
6	5"	1.5"S
8	6.5"	1.5", 2.5"S
10	8.1"	1.5", 2.5"S
13	10.5"	1.5", 2.5"S

Special Order Sprockets Available

Belt Standard Alterations	+/- 1"
Flight Standard Indent	+/- 1.5"



**SAFARI** Belting Systems, Inc.  
Conveying Innovation to Industry