

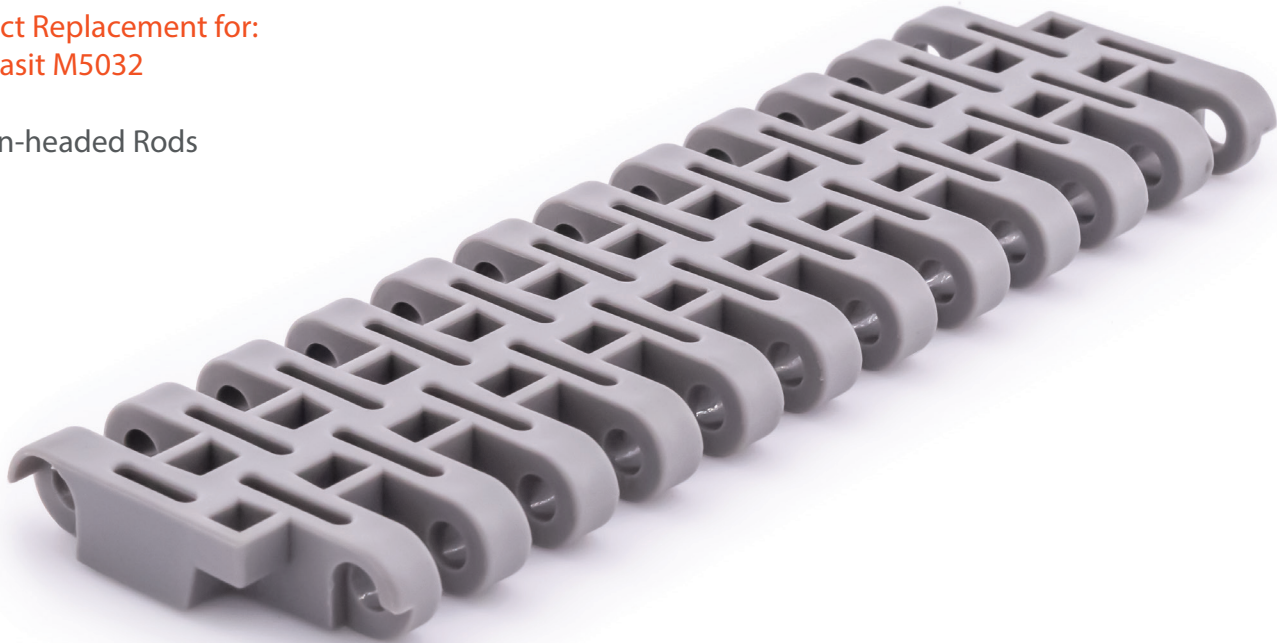
SF-900BHD

Heavy Duty Flush Grid

2" Pitch

Direct Replacement for:
Habasit M5032

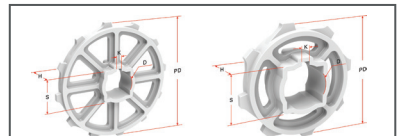
*Non-headed Rods



Pitch	Thickness	Min Width	Rod	Open Area	Flights	Side Guards
2"	.63"	8.81"	.275"	32%	Yes	No
50.8mm	16mm	224mm	7mm			

Belt Material	Standard Rod Material	Belt Strength		Temperature Fahrenheit		Belt Weight Lb/Ft ²	Colors
		Straight Lb/Ft	Curved Lb/Ft	Min	Max		
PP	PP	1844	-	33°	230°	1.68	W, G, B
PE	POM	1753	-	-76°	140°	1.76	N, B
Acetal	POM	2076	-	-50°	150°	2.54	W, B
Nylon	PA	1612	-	33°	356°	2.29	BK, BR

BW = Belt Width, W-WHITE, B-BLUE, DB-DARK BLUE, RB-ROYAL BLUE, N-NATURAL, G-GRAY, BK-BLACK, BR-BROWN



# of Teeth	PD	Bore Size
8	4.78"	1.5"S
9	5.47"	1.5"s
10	6.19"	1.5"S
12	7.40"	1.5"S

Special Order Sprockets Available

Belt Standard Alterations	+/- .75"
Flight Standard Indent	+/- 1.5"



SAFARI Belting Systems, Inc.
Conveying Innovation to Industry