



**SAFARI**  
BELTING SYSTEMS

# LF-821 Straight Running Plastic Chain

DIMENSION	INCH	mm
P	1.5	38.1
H	.563	14.3
T	.189	4.8
E	.311	7.9
M	5.374	136.5
F	.311	7.9
V	.512	13.0
RD	1.575	40.0
GC	5.512	140.0

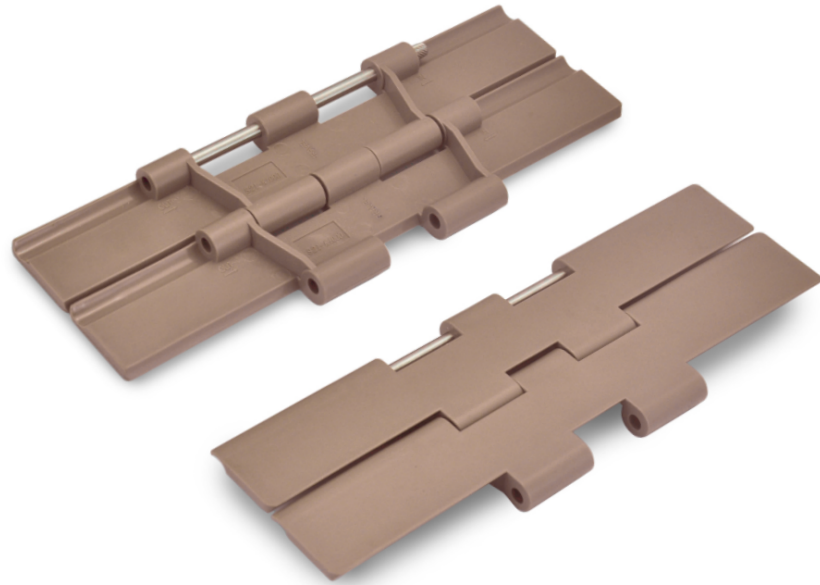
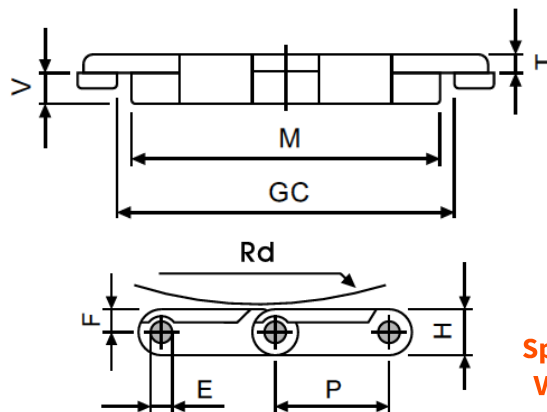
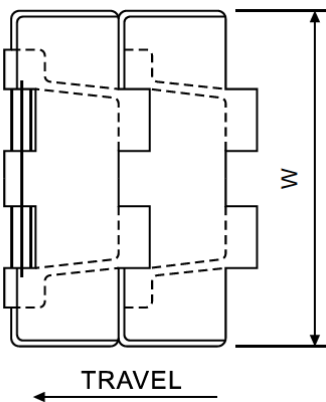


Plate Materials: POM-LF

Pin Material: Cold rolled austenitic stainless steel

CHARACTERISTICS	WIDTH W		WORKING LOAD		RADIUS		REV RADIUS		WEIGHT
	mm	inch	N(70 F)	Lbs(70F)	mm	inch	mm	inch	lbs/ft
LF-821-K750	190.5	7.50	2680	603	~	~	50	1.97	1.68
LF-821-K1000	254.0	10.00	2680	603	~	~	50	1.97	2.00
LF-821-K1200	304.8	12.00	2680	603	~	~	50	1.97	2.21



Sprockets and Idler Wheels Available in a Variety of Tooth Counts and Bore Sizes.



**SAFARI** Belting Systems, Inc.

900 East Loula | Olathe, Kansas 66061 USA

info@safaribelting.com | (913) 254-7582

www.safaribelting.com

Toll Free (888) 662-6611

Toll Free Fax (888) 234-3070

Competitively Priced. Customer Driven. Quality Focused.