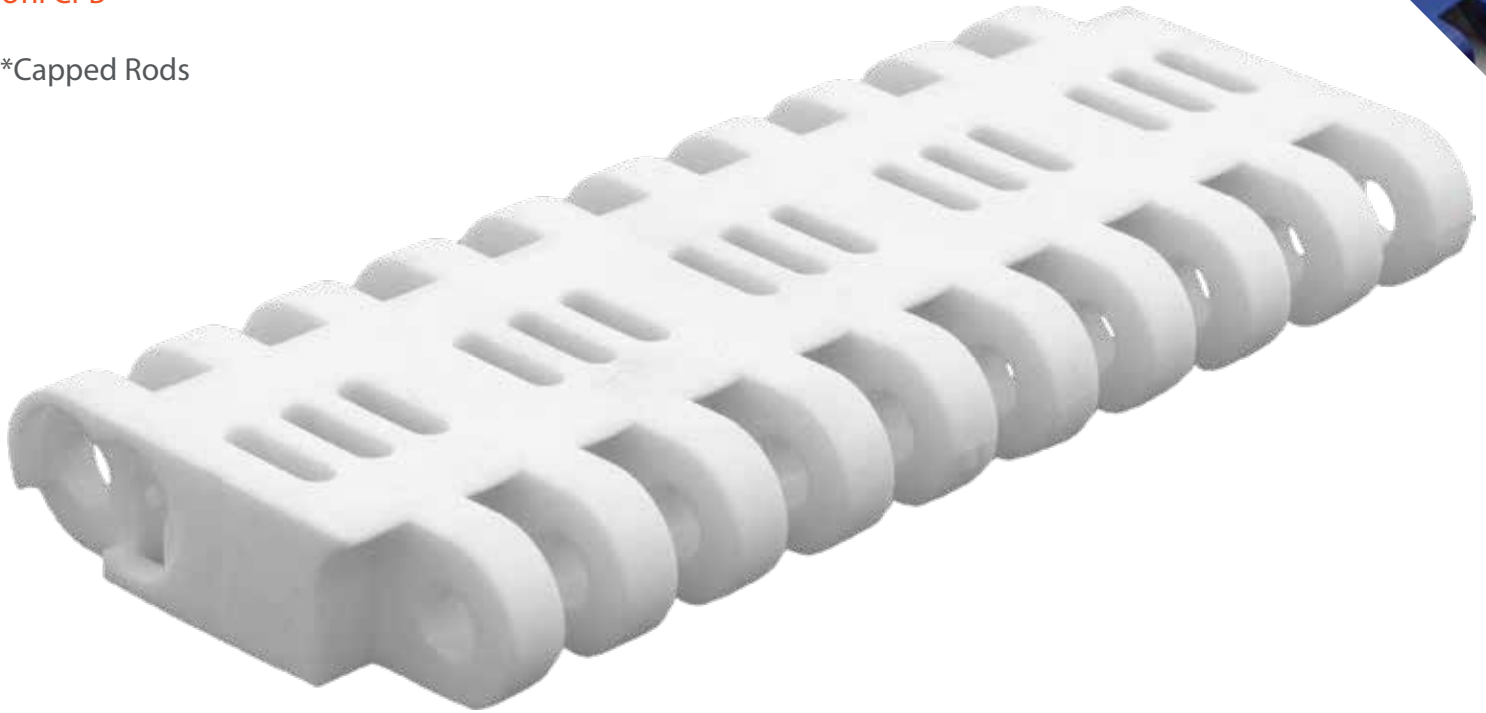


# SF-1600B

## Heavy Duty Perforated Flat Top 2" Pitch

Replaces:  
Uni CPB

\*Capped Rods

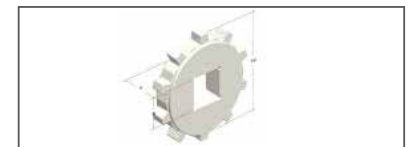


Pitch	Thickness	Min Width	Rod	Open Area	Flights	Side Guards
2"	.75"	6.5"	.315"	11%	Pusher	No
50.8mm	19.1mm	165mm	8mm			

Belt Material	Standard Rod Material	Belt Strength		Temperature Fahrenheit		Belt Weight Lb/Ft <sup>2</sup>	Colors
		Straight Lb/Ft (BW)	Curved Lb/Ft (BW)	Min	Max		
PP + AS	PA	2016	-	33°	230°	3.07	W, G, B
Acetal	PA	3360	-	-76°	140°	4.36	N, B
Acetal + AS	PA	3360	-	-40°	180°	4.36	N, DB

SS Rods Available

BW = Belt Width, W-WHITE, B-BLUE, DB-DARK BLUE, RB-ROYAL BLUE, N-NATURAL, G-GRAY, BK-BLACK, BR-BROWN



# of Teeth	PD	Bore Size
12	7.7"	1.5", 2.5"S
15	9.6"	2.5"S
18	11.5"	3.5"S

Special Order Sprockets Available

Belt Standard Alterations	+/- 1.3"
Flight Standard Indent	N/A



**SAFARI** Belting Systems, Inc.

Conveying Innovation to Industry

220 N Mahaffie Street, Olathe, KS 66061, USA | 913-254-7582 | info@safaribelting.com | SafariBelting.com