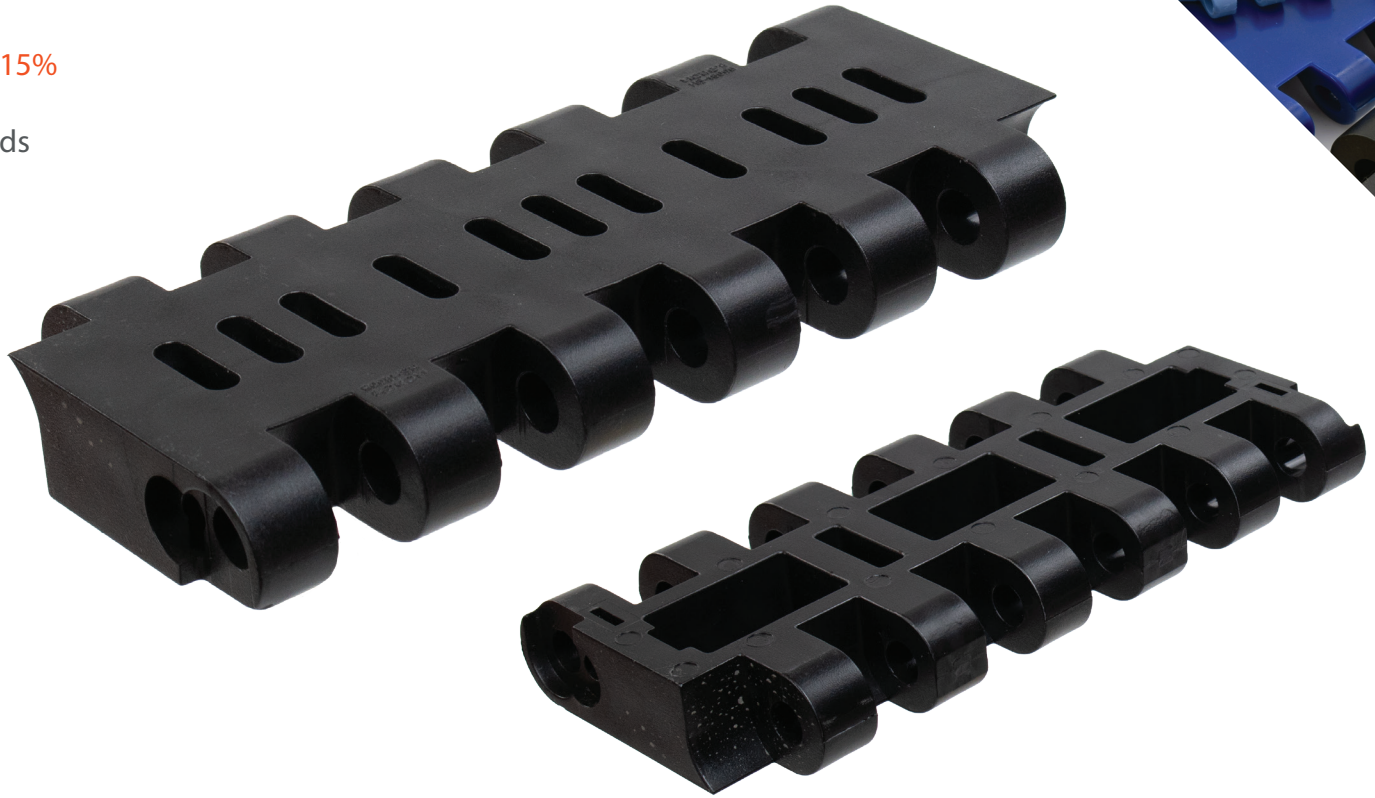


SF-1800B

Heavy Duty Perforated Flat Top 2.5" Pitch

Replaces:
Uni XLB M2 15%

*Capped Rods



Pitch	Thickness	Min Width	Rod	Open Area	Flights	Side Guards
2.5"	1"	8"	.393"	10%	Pusher	No
63.5mm	25mm	200mm	10mm			

Belt Material	Standard Rod Material	Belt Strength		Temperature Fahrenheit		Belt Weight Lb/Ft ²	Colors
		Straight Lb/Ft (BW)	Curved Lb/Ft (BW)	Min	Max		
Acetal	PA	6719		-40°	176°	6.82	BK
Acetal + AS	PA	6719	-	-40°	176°	6.82	BK
ULT	ULT	6719	-	30°	302°	6.85	BK
SS Rods Available							

BW = Belt Width, W-WHITE, B-BLUE, DB-DARK BLUE, RB-ROYAL BLUE, N-NATURAL, G-GRAY, BK-BLACK, BR-BROWN

# of Teeth	PD	Bore Size
10	7.7"	2.5"S
13	9.6"	2.5", 3", 4"S
15	11.5"	3.5"S

Special Order Sprockets Available

Belt Standard Alterations	+/- 2.6"
Flight Standard Indent	N/A



SAFARI Belting Systems, Inc.

Conveying Innovation to Industry

220 N Mahaffie Street, Olathe, KS 66061, USA | 913-254-7582 | info@safaribelting.com | SafariBelting.com