

# ULTRA-TUFF™ BONE CONVEYOR IN-FEED



SAFARI  
BELTING



## Chemical Resistance

Withstands continuous exposure to PAA, other strong acids & bases.



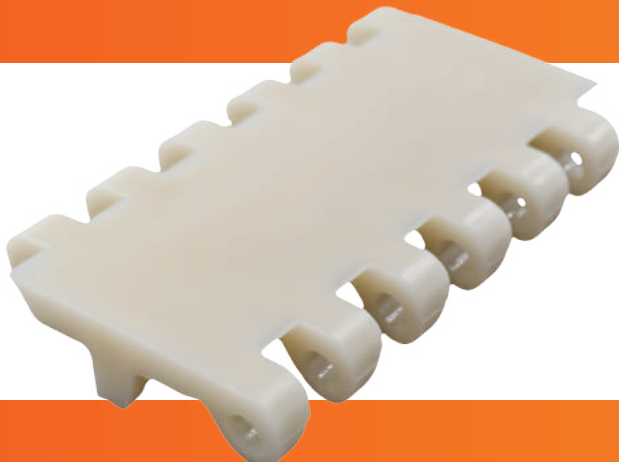
## Impact Resistance

Maintains high impact strength for exceptional performance and operational stability.



## Abrasion Resistance

Withstands abrasion from both friction and wear which more than doubles belt service life.



**CUSTOMER DOCUMENTED  
ANNUAL COST SAVINGS  
\$19,000 PER APPLICATION**

## COST SAVINGS DETAILS

### PROBLEM

Large, bone-in product dropping directly onto belt causing weekly module replacement, frequent down-time and full belt replacement every 2 months. Additionally, application caused frequent foreign material contamination concerns.

### SOLUTION

Customer replaced Intralox S1800 (2.5" pitch) with Safari's Series 250 (2.5" pitch) ULTRA-TUFF™ belt.

### RESULTS

Safari ULTRA-TUFF™ belt installed in June 2018. It was replaced in December 2019 as preventative maintenance. During the 18-month service life, no broken modules, no performance issues. **PROBLEM SOLVED!**



**SAFARI BELTING**  
Conveying Innovation to Industry