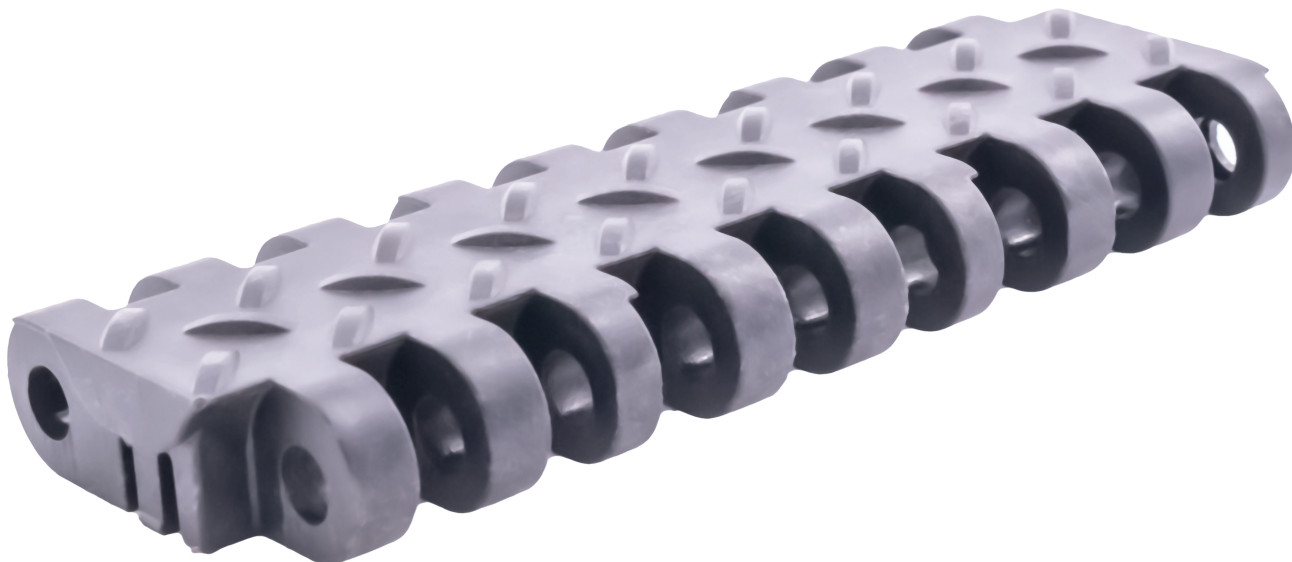


SF-6800D

Heavy Duty Textured Top

1.5" Pitch

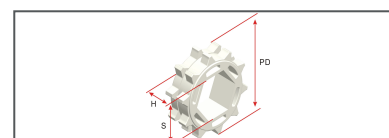
Replaces:
Uni ACB



Pitch	Thickness	Min Width	Rod	Open Area	Flights	Side Guards
1.5"	.75"	6"	.31"	0%	No	No
38.1mm	19mm	150mm	8mm			

Belt Material	Standard Rod Material	Belt Strength		Temperature Fahrenheit		Belt Weight Lb/Ft ²	Colors
		Straight Lb/Ft	Curved Lb/Ft	Min	Max		
Acetal	POM	3696	-	-50°	150°	3.58	W, BK
Acetal+AS	POM	3696	-	-50°	150°	3.58	W, BK

BW = Belt Width, W-WHITE, B-BLUE, DB-DARK BLUE, RB-ROYAL BLUE, N-NATURAL, G-GRAY, BK-BLACK, BR-BROWN



# of Teeth	PD	Bore Size
10	4.7"	2.4"

Special Order Sprockets Available

Belt Standard Alterations	+/- 2"
Flight Standard Indent	N/A



SAFARI Belting Systems, Inc.

Conveying Innovation to Industry

220 N Mahaffie Street, Olathe, KS 66061, USA | 913-254-7582 | info@safaribelting.com | SafariBelting.com