

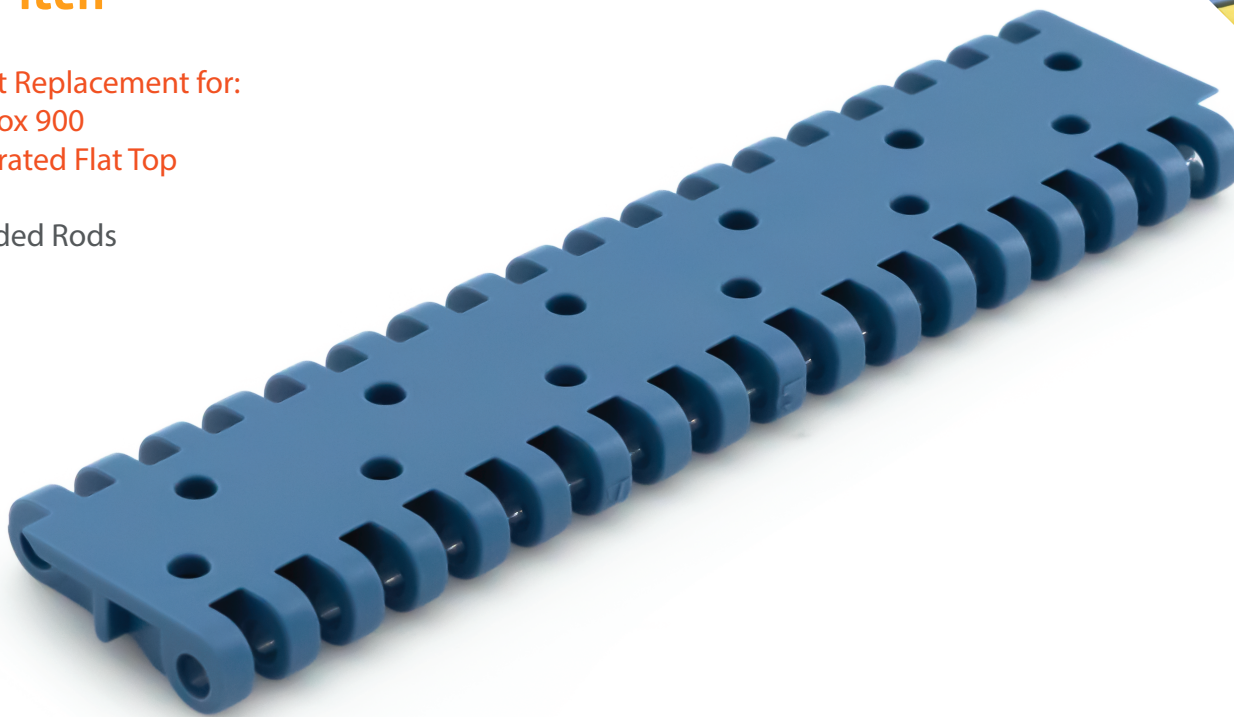
SF-700AB-N

Standard Duty Perforated Flat Top

1" Pitch

Direct Replacement for:
Intralox 900
Perforated Flat Top

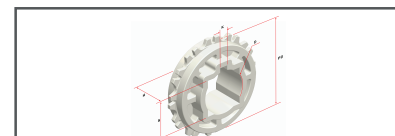
*Headed Rods



Pitch	Thickness	Min Width	Rod	Open Area	Flights	Side Guards
1.07"	.59"	.344"	.18"	7%	Yes	Yes
27.2mm	15mm	8.7mm	4.6mm			

Belt Material	Standard Rod Material	Belt Strength		Temperature Fahrenheit		Belt Weight Lb/Ft ²	Colors
		Straight Lb/Ft	Curved Lb/Ft	Min	Max		
PP	PP	710	-	33°	230°	1	W, G, B
PE	POM	360	-	-76°	140°	1.17	N, B
Acetel	POM	1010	-	-50°	150°	1.39	W, B
Nylon	PA	1215	-	33°	356°	1.33	BR

BW = Belt Width, W-WHITE, B-BLUE, DB-DARK BLUE, RB-ROYAL BLUE, N-NATURAL, G-GRAY, BK-BLACK, BR-BROWN



# of Teeth	PD	Bore Size
6	2.1"	1"R, 1"S
9	3.1"	1"R, 1.5"S
10	3.5"	1"R, 1.5"S
12	4.1"	1"R, 1.5"S
18	6.1"	1.5", 2.5"S
20	6.8"	1.5", 2.5"S
20-split	6.8"	2.5"S
24	8.3"	1.5"S

Special Order Sprockets Available

Belt Standard Alterations	+/- .33"
Flight Standard Indent	+/- 2"



SAFARI Belting Systems, Inc.
Conveying Innovation to Industry

220 N Mahaffie Street, Olathe, KS 66061, USA | 913-254-7582 | info@safaribelting.com | SafariBelting.com