

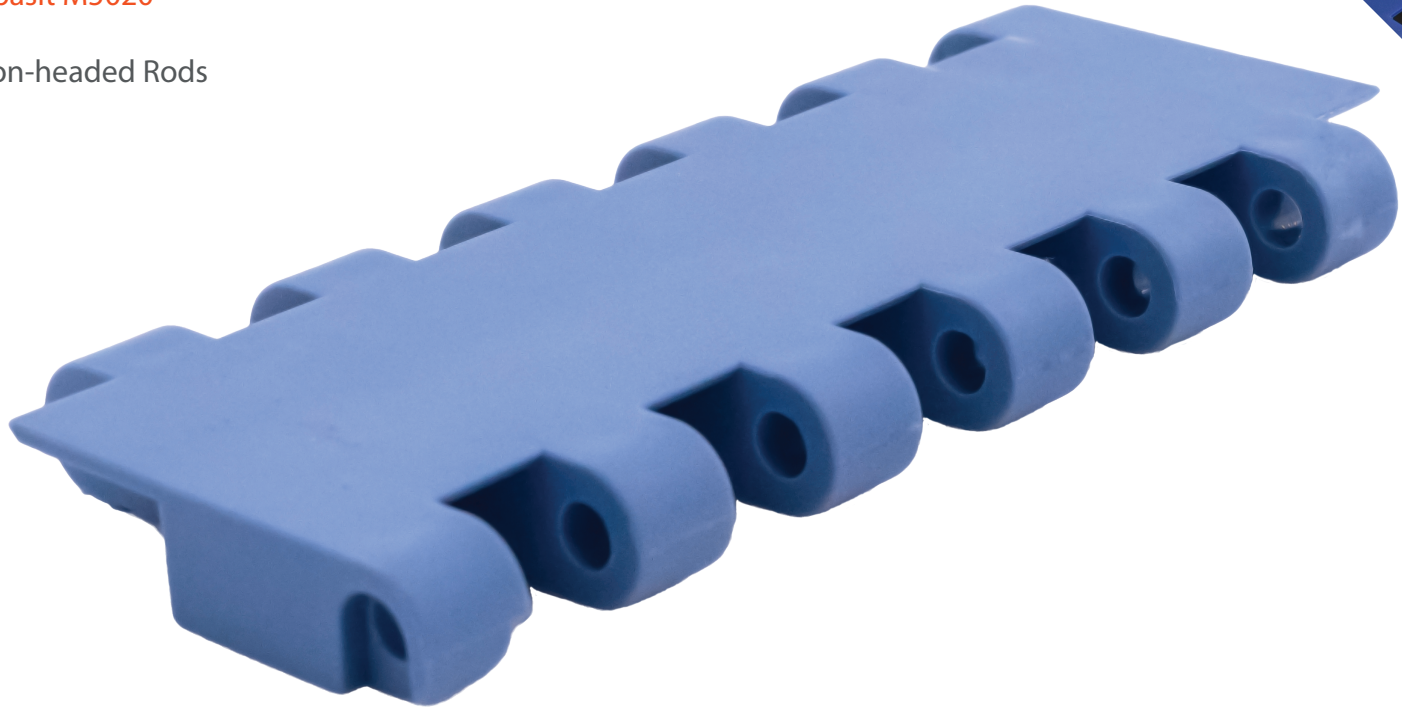
SF-900A

Standard Duty Flat Top

2" Pitch

Direct Replacement for:
Habasit M5020

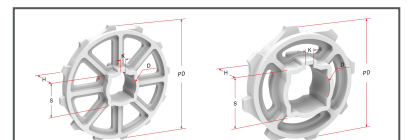
*Non-headed Rods



Pitch	Thickness	Min Width	Rod	Open Area	Flights	Side Guards
2"	.55"	6"	.236"	0%	Yes	No
50.8mm	14mm	150mm	6mm			

Belt Material	Standard Rod Material	Belt Strength		Temperature Fahrenheit		Belt Weight Lb/Ft ²	Colors
		Straight Lb/Ft	Curved Lb/Ft	Min	Max		
PP	PP	1844	-	33°	230°	1.35	W, G
PE	POM	1754	-	-76°	140°	1.52	N
Acetal	POM	2076	-	-50°	150°	1.95	W, B
Nylon	PE	1613	-	33°	356°	1.75	G

BW = Belt Width, W-WHITE, B-BLUE, DB-DARK BLUE, RB-ROYAL BLUE, N-NATURAL, G-GRAY, BK-BLACK, BR-BROWN



# of Teeth	PD	Bore Size
6	4.78"	1.5"S
9	5.79"	1.5"S
12	7.70"	1.5", 2.5"S

Special Order Sprockets Available

Belt Standard Alterations	+/- 1"
Flight Standard Indent	+/- 2"



SAFARI Belting Systems, Inc.
Conveying Innovation to Industry

220 N Mahaffie Street, Olathe, KS 66061, USA | 913-254-7582 | info@safaribelting.com | SafariBelting.com