

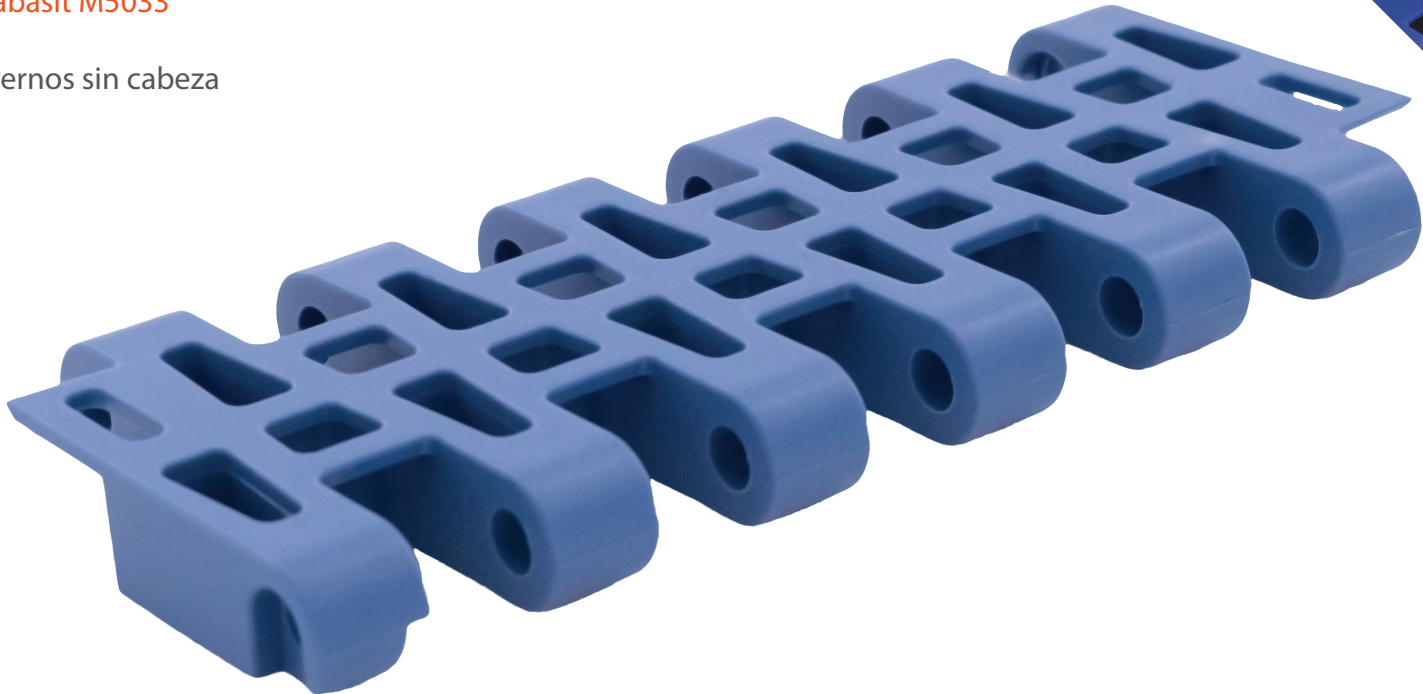
# SF-900B

## Standard Duty Flush Grid

### Paso 2"

Reemplazo Directo para:  
Habasit M5033

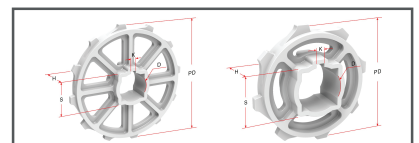
\*Pernos sin cabeza



| Paso   | Espesor | Ancho Mínimo | Perno | Área Abierta | Empujadores | Guardas Laterales |
|--------|---------|--------------|-------|--------------|-------------|-------------------|
| 2"     | .55"    | 6"           | .236" | 34%          | Si          | No                |
| 50.8mm | 14mm    | 150mm        | 6mm   |              |             |                   |

| Material de la Banda | Material Estándar del Perno | Resistencia de la Banda |             | Rango de Temperatura Celsius |      | Peso de la Banda Lb/Ft <sup>2</sup> | Colores |
|----------------------|-----------------------------|-------------------------|-------------|------------------------------|------|-------------------------------------|---------|
|                      |                             | Recta Lb/Ft             | Curva Lb/Ft | Min                          | Max  |                                     |         |
| PP                   | PP                          | 900                     | -           | 1°                           | 110° | 1.35                                | W, G    |
| PE                   | PE                          | 860                     | -           | -60°                         | 60°  | 1.52                                | N       |
| Acetal               | PE                          | 1188                    | -           | -46°                         | 66°  | 1.95                                | W, B    |
| Nylon                | PE                          | 1020                    | -           | 1°                           | 180° | 1.75                                | G       |

BW = Ancho de la Banda, W-Blanco, B-Azul, DB-Azul Oscuro, RB-Azul Real, N-Natural, G-Gris, BK-Negro, BR-Café



| # de Dientes | Diámetro de Paso | Medida del Barreno |
|--------------|------------------|--------------------|
| 6            | 3.78"            | 1.5"S              |
| 9            | 5.79"            | 1.5"S              |
| 12           | 7.70"            | 1.5", 2.5"S        |

Sprockets especiales disponibles sobre pedido

|                                    |        |
|------------------------------------|--------|
| Alteración estándar de la banda    | +/- 1" |
| Sangría estándar de la Empujadores | +/- 2" |



**SAFARI** Belting Systems, Inc.

Conveying Innovation to Industry

220 N Mahaffie Street, Olathe, KS 66061, USA | 913-254-7582 | info@safaribelting.com | SafariBelting.com