

# SF-225H

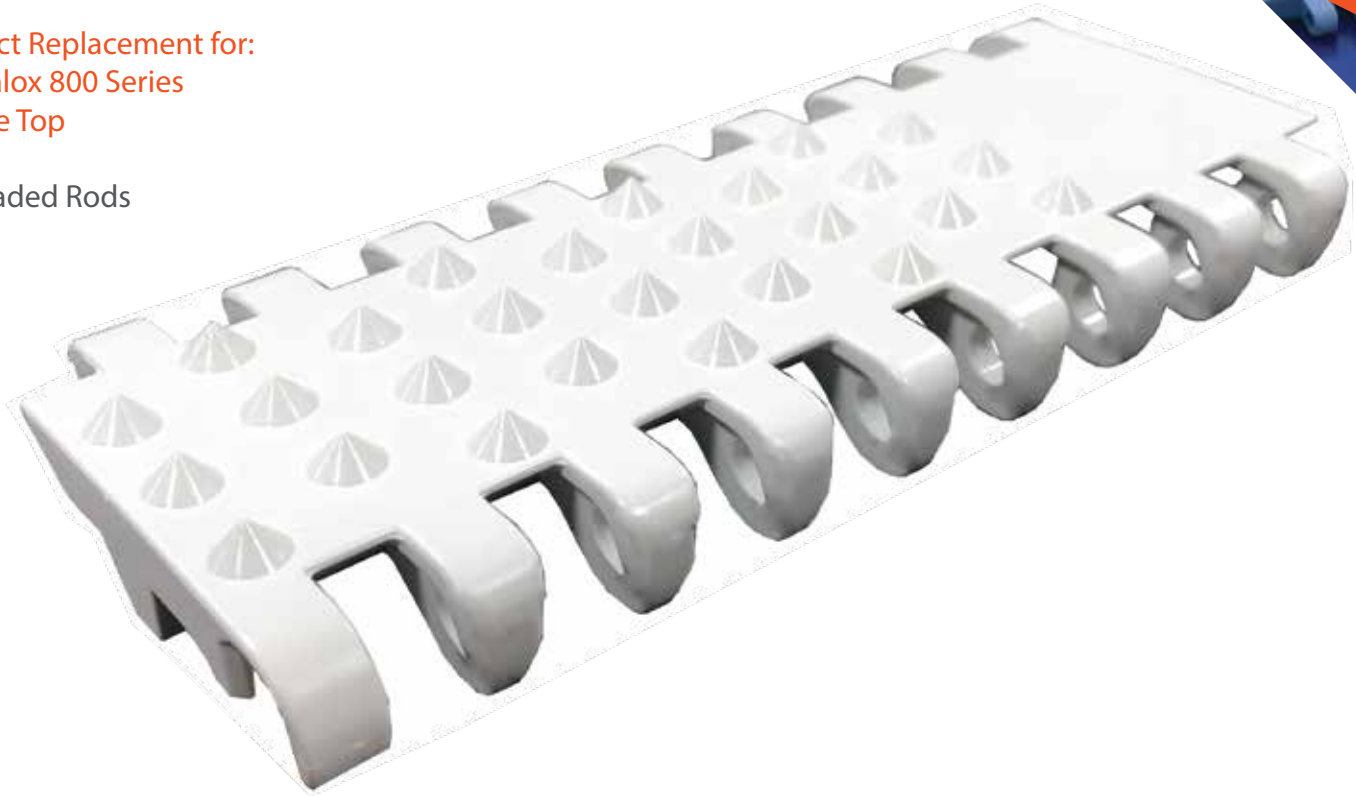
## Heavy Duty Cone Top

### 2" Pitch



Direct Replacement for:  
Intralox 800 Series  
Cone Top

\*Headed Rods



Pitch	Thickness	Min Width	Rod	Open Area	Flights	Side Guards
2"	.725"	4"	.24"	0%	Yes	No
50.8mm	18.4mm	101.6mm	6.1mm			

Belt Material	Standard Rod Material	Belt Strength		Temperature Fahrenheit		Belt Weight Lb/Ft <sup>2</sup>	Colors
		Straight Lb/Ft	Curved Lb/Ft	Min	Max		
PP	PP	900	-	33°	230°	1.95	W, G, B
PE	POM	860	-	-76°	140°	2.10	N, B
Acetal	POM	1200	-	-50°	150°	3.10	N, DB
Ultra Tuff™	POM	1186	-	30°	302°	3.07	N, W, DB
Ultra Tuff XMD™	POM	1186	-	30°	302°	3.41	RB

BW = Belt Width, W-WHITE, B-BLUE, DB-DARK BLUE, RB-ROYAL BLUE, N-NATURAL, G-GRAY, BK-BLACK, BR-BROWN

# of Teeth	PD	Bore Size
6	3.8"	1"R, 1.5"S
8	5.1"	1"R, 1.5"S
10	6.5"	1.5", 2.5"S
12	7.7"	1.5", 2.5"S
16	10.3"	1.5", 2.5"S

Special Order Sprockets Available

Belt Standard Alterations	+/- .65"
Flight Standard Indent	+/- 1.5"



**SAFARI** Belting Systems, Inc.  
Conveying Innovation to Industry