

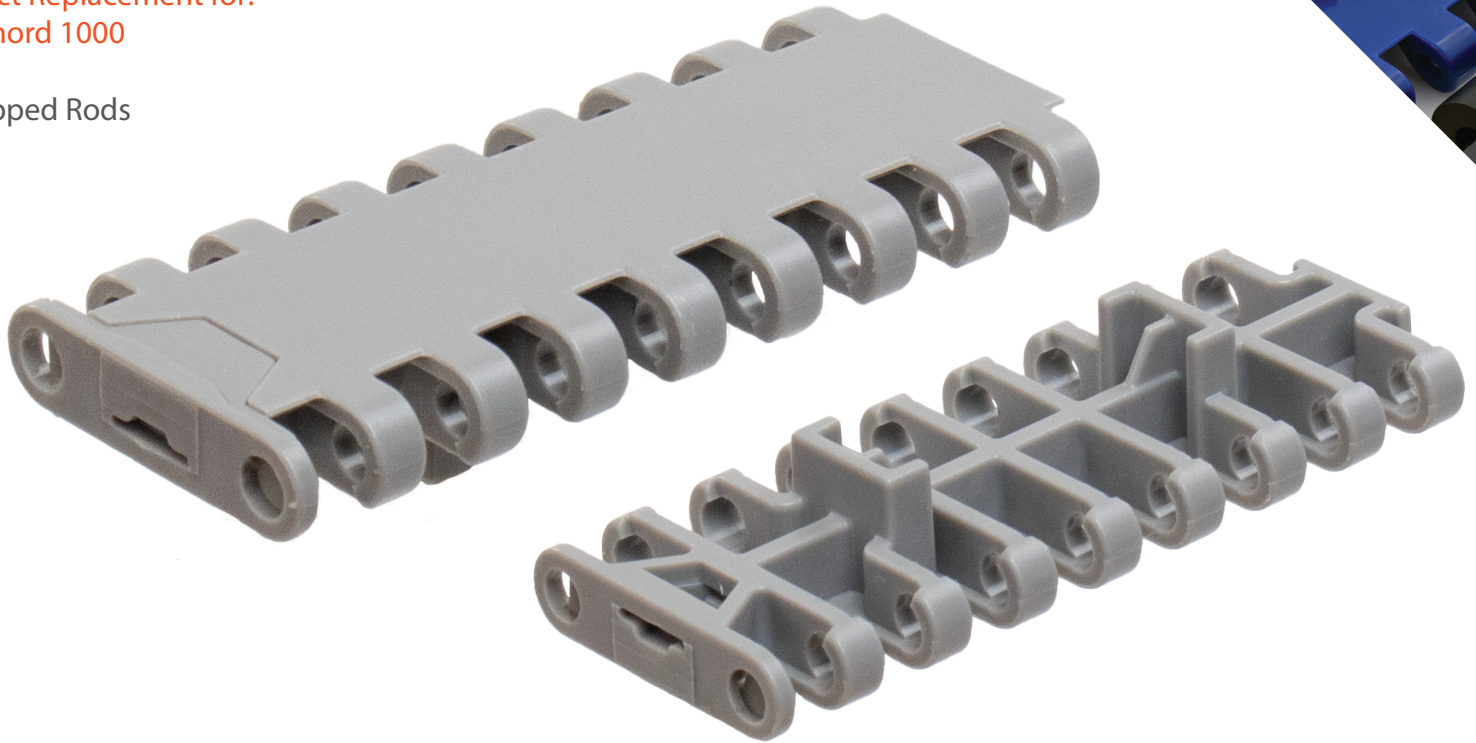
# SF-F1000A/MTW

Flat Top - Tab/Non-Tab/Mold-to-Width

1" Pitch

Direct Replacement for:  
Rexnord 1000

\*Capped Rods



Pitch	Thickness	Min Width	Rod	Open Area	Flights	Side Guards
1"	.339"	3"	.177"	0%	No	No
25.4mm	8.6mm	84mm	4.5mm			

Belt Material	Standard Rod Material	Belt Strength		Temperature Fahrenheit		Belt Weight Lb/Ft <sup>2</sup>	Colors
		Straight Lb/Ft	Curved Lb/Ft	Min	Max		
POM	POM	4850	-	-40°	176°	1.08	W,G,GR,B

BW = Belt Width, W-WHITE, B-BLUE, DB - DARK BLUE, RB-ROYAL BLUE, N-NATURAL, G-GRAY, BK-BLACK, BR-BROWN, GR - GREEN

# of Teeth	PD	Bore Size
16T-2R Split	5.12"	1.5"

Special Order Sprockets Available



**SAFARI** Belting Systems, Inc.

Conveying Innovation to Industry