

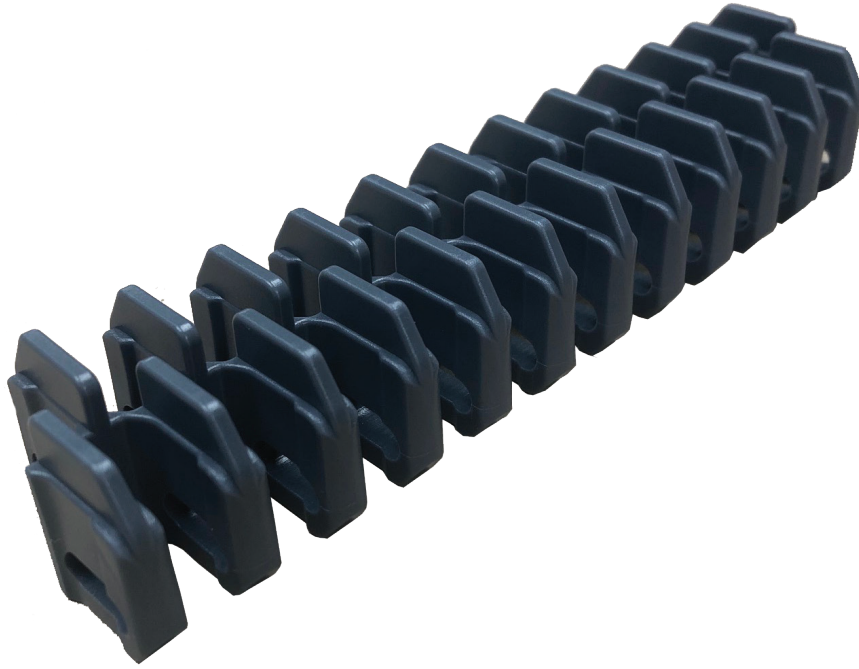
# SF-2400R

## Radius Raised Rib Flush Grid

### 1" Pitch

Direct Replacement  
Intralox 2400  
Raised Rib Flush Grid

\*Non-Headed Rods



Pitch	Thickness	Min Width	Rod	Open Area	Flights	Side Guards
1"	.9"	4"	.177"	42%	No	No
25mm	23mm	101.6mm	4.5mm			

Belt Material	Standard Rod Material	Belt Strength		Temperature Fahrenheit		Belt Weight Lb/Ft <sup>2</sup>	Colors
		Straight Lb/Ft	Curved Lb/Ft	Min	Max		
PP	PA	1600	230	33°	230°	1.50	B, G, W
POM	PA	1720	330	-50°	150°	1.75	B, W
Nylon	PA	1720	330	33°	180°	2.45	BR
ULT	ULT	1700	375	30°	302°	1.40	B, N, W

BW = Belt Width, W-WHITE, B-BLUE, DB-DARK BLUE, RB-ROYAL BLUE, N-NATURAL, G-GRAY, BK-BLACK, BR-BROWN

# of Teeth	PD	Bore Size
12	3.9"	1"R, 1.5"S
18	5.8"	1"R, 1.5"S
24	7.9"	1.5", 2.5"S
12-2R	3.9"	1"R, 1.5"S
15-2R	4.9"	1"R, 1.5"S
18-2R	5.8"	1.5", 2.5"S
20-2R	6.8"	1.5"S

Special Order Sprockets Available

Belt Standard Alterations	+/- 1"
Radius Turn Minimum	2.2



**SAFARI** Belting Systems, Inc.  
Conveying Innovation to Industry